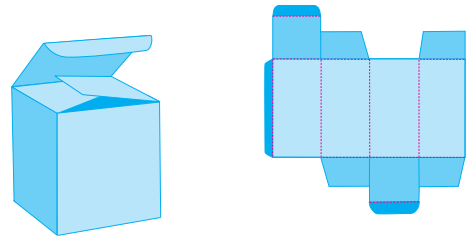


## Basic Closures

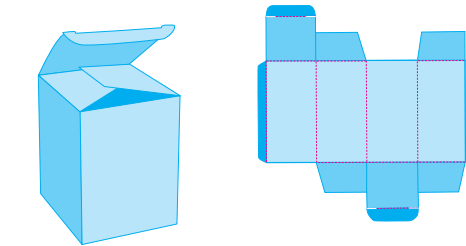
Packaging provides a temporary barrier between the package's contents and the outside. The closure can also contribute to the rigidity of the carton, as we determine or transform the purpose of a carton.

Closures come in forms other than the standard tuck-lid box. The disc and string closure, used in mainly envelope closing, consists of a disc on one side with string attached and another on the opposite side to wrap the string around allowing for a secure, quickly accessible opening and closing.

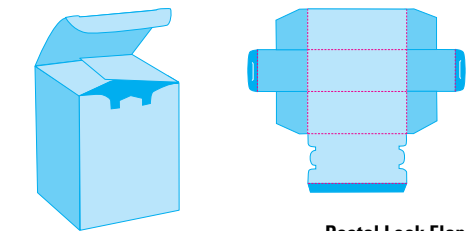
The disc and string closer, used in magnets, Velcro, press studs, and elastic, have gained popularity in recent years.



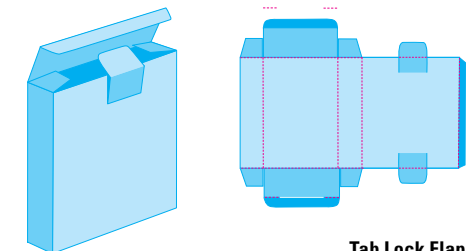
Standard Tuck-Flap



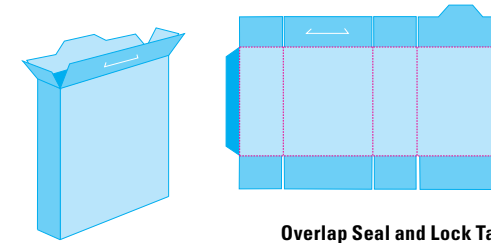
Slit-Lock Tuck Flap



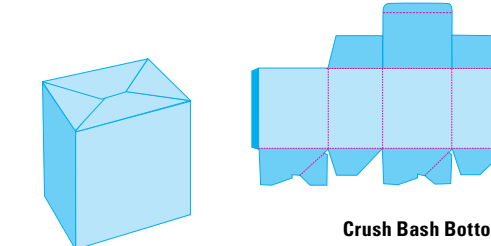
Postal Lock Flap



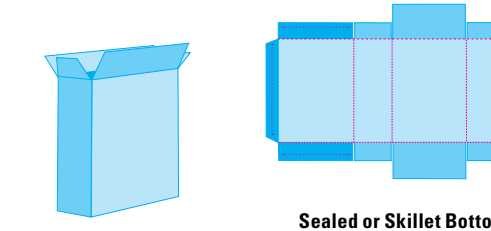
Tab Lock Flap



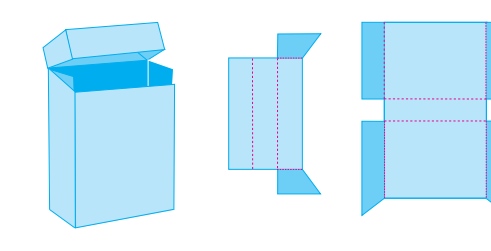
Overlap Seal and Lock Tab



Crush Bash Bottom



Sealed or Skillet Bottom



Flip-Top

**STANDARD TUCK-FLAP CARTON:** Appropriate for individually wrapped items such as bandages or products in squeezable tubes. Also a good choice as a container for food items such as tea and sugar packets where reusability is important. May require a seal or outer wrapping to ensure contents will remain intact prior to purchase.

**SLIT-LOCK TUCK CARTON:** Application is similar to standard tuck-flap carton, except slits provide a more secure seal. For tamper resistance, add a seal or a protective outer wrapping.

**POSTAL-LOCK:** Although not reusable, this completely tamper-proof option has an arrowhead tab that tears on opening, providing proof of entry.

**TAB-LOCK:** Slits and tab provide additional protection against tampering and lid being forced open by inside pressure from the contents.

**OVERLAP SEAL AND LOCK TAB:** Partial overlap sealed end with lock tab and lock slot. This option is used for items that contain a moisture-proof bag such as cereal, cookies, or crackers. Initially the top is glued shut, the tab and slot as a reusable closure after the carton is opened.

**SNAP-LOCK BOTTOM:** The strongest and simplest constructed box. The box is pre-glued and folded flat for fast and easy assembly and storage.

**SKILLET OR SEALED END:** A good choice when strength is a concern. The construction gives the bottom greater strength and needs to be secured with adhesive.

**FLIP-TOP:** A hinge-lid box having a box part and a lid on the rear wall of the box. A collar is anchored in the box part and has a collar front wall to allow to fold down and enclose the box like a crayon box.